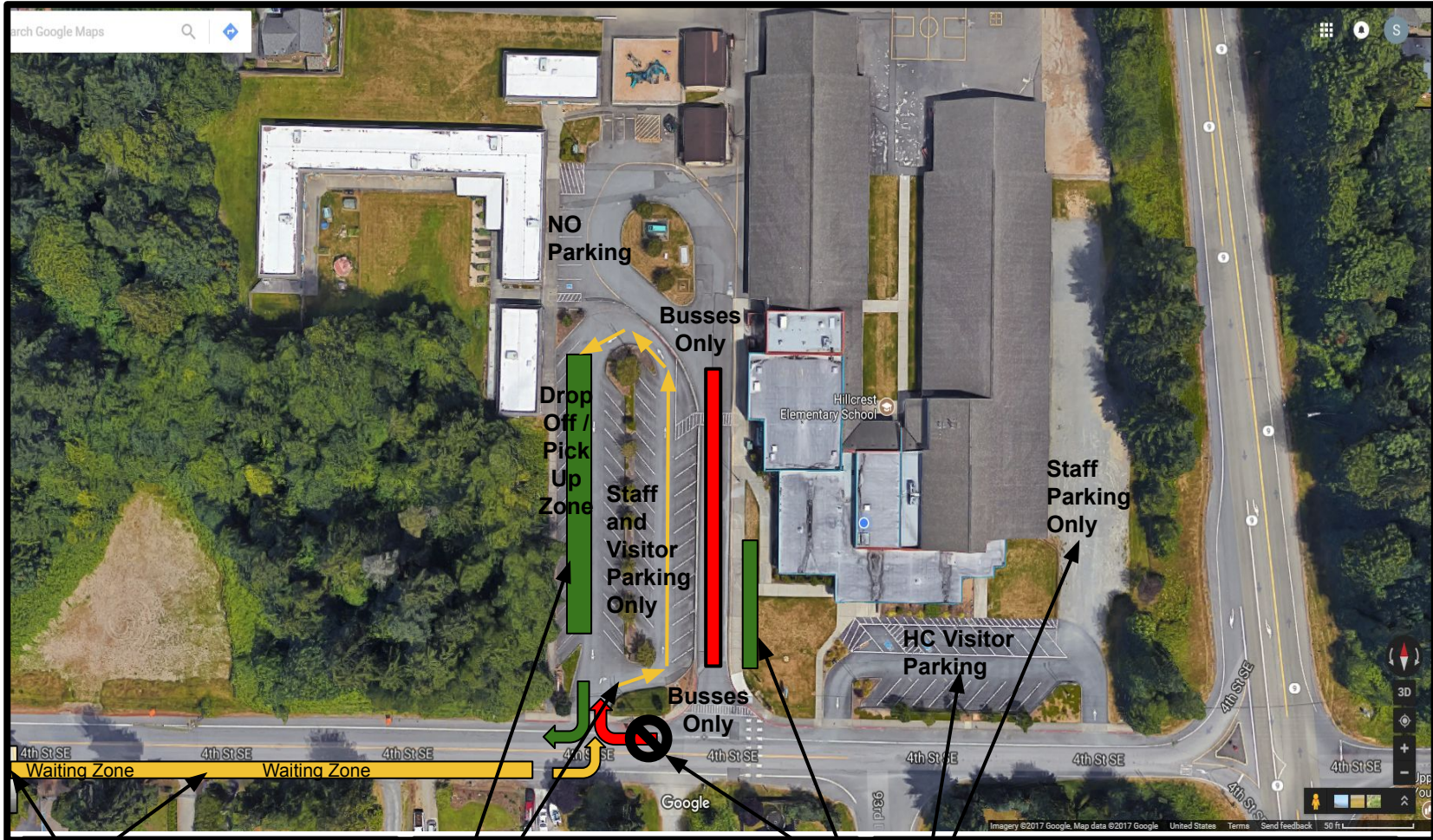


Hillcrest Parking and Student Drop Off/Pick Up Plan (2019-2020)

Please take a moment to review this plan. If we are all aware of the traffic flow plan, things will run smoothly and safely. Remember to be patient and to follow all traffic laws when parking or waiting to drop off or pick up students. We can do it! :)



Drop off and pick up waiting line happens in the holding lane along the south edge of 4th St. SE.

- Do not block driveways while waiting.
- Use caution when turning into lot.

- Student drop off and pick up along west curb.
- Form waiting line in parking lot loop.
- No visitor parking in this lot.
- Staff Parking in this lot only.
- Please do not block entrance/exit.
- Right turn only out of lot.

- Hillcrest visitor parking
- Staff parking only
- No right turn into drop off/pick up zone
- **There will be no student drop off or pick up in front of the school this year.** (Unless it's after the school day has begun. Arriving late or early dismissal.)
- Parents waiting for walkers.
- Please do not block driveways in the neighborhood.